

Telecamere fisse TS 4MPX-BASIC

Lettura targhe free flow

Telecamera Fissa con Streaming video e cattura immagine in contemporanea e lettura della targa. Riconoscimento di **targa del veicolo di più di 50 paesi Europei**.

Possibilità di configurazione avanzata del dispositivo.

Osd, esposizione video e lettura delle targhe indipendenti.



**GARANZIA
5 ANNI**



TS 123456

Lettura
targhe



Configurazione
avanzata



In ogni
condizione



Tecnologia
anpr ocr

Fino a
99,2%
di letture corrette

OCR da
4 Mpx
di risoluzione

Fino a
70°
angolo di lettura

SOLUZIONI PROGETTATE
PER LE FORZE
DELL'ORDINE



Veicoli e targhe rubate



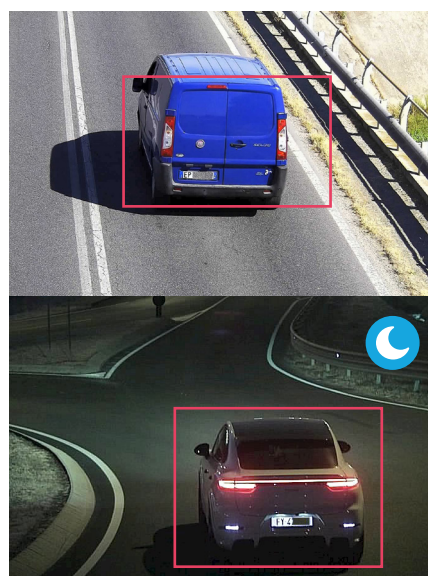
Veicoli in black list o sequestri



Non assicurati o revisionati

Funzionalità

- OCR integrato nella telecamera
- Lettura free flow o con colleg. a dispositivi esterni
- Memoria interna fino a 128 gb
- Lettura targhe a colori
- Lettura codice Kemler
- Led IR integrati
- Registrazione flusso video ONVIF Rtp/Rtsp
- Interfaccia per configurazione e visione transiti
- Caric. su memoria interna di Black e White list
- Ottica motorizzata 8-32 mm (con autofocus)
- Alimentazione PoE+





Telecamere fisse

TS 4MPX - BASIC

Lettura targhe free flow

Camera	
Image Sensor	1/1.8" Progressive Scan CMOS
Min. Illumination	Color: 0.001 Lux @ (F1.2, AGC ON), 0.0001 Lux with IR
Shutter Speed	1/25 s to 1/100,000 s
Slow Shutter	Yes
Day & Night	IR Cut Filter
Digital Noise Reduction	3D DNR
WDR	140 dB
Lens	
Focal Length	4 to 11 mm, 8 to 32 mm
Aperture	4 to 11 mm :F1.38, 8 to 32 mm:F1.63~1.8
Focus	Auto
FOV	4 to 11 mm, horizontal FOV 114.7° to 41.9°, vertical FOV 59.4° to 23.6°, diagonal FOV 141.5° to 48.1° 8 to 32 mm, horizontal FOV 39.7° to 15.9°, vertical FOV 22.3° to 9.1°, diagonal FOV 45.8° to 18.1°
Auto-iris	DC drive
IR	
IR Range	4 to 11 mm, Up to 50 m 8 to 32 mm, Up to 100 m
Wavelength	850 nm
Compression Standard	
Video Compression	Main stream: H.265/H.264/MJPEG Sub-stream: H.265/H.264/MJPEG
H.264 Type	Baseline Profile/Main Profile/High Profile
H.265 Type	Baseline Profile/Main Profile/High Profile
Video Bit Rate	32 Kbps to 16 Mbps
Audio Compression	G.711/G.722.1
Audio Bit Rate	8Kbps (G.711) /16Kbps (G.722.1)
Smart feature	
Recognition	License Plate Recognition
Smart Function	No-plate vehicle capture, driving direction detection

Road Traffic and Vehicle Detection	
Countries/Regions	<p>Mid-East: Turkey, United Arab Emirates, Qatar, Iran, Iraq, Egypt, Jordan, Kuwait, Saudi Arabia, Tunisia, Palestine, Pakistan</p> <p>Africa: South Africa, Kenya, Nigeria, Tanzania, Mauritius, Morocco</p> <p>Asia-Pacific: Australia, New Zealand, Indonesia, Malaysia, Singapore, South Korea, Thailand, Vietnam, the Philippines, Hong Kong, Macao, Taiwan, Burma, Japan, India, Mongolia</p> <p>America: United States of America, Colombia, Brazil, Ecuador, Peru, Mexico</p> <p>Europe: Croatia, Slovakia, Czech Republic, Bulgaria, Macedonia, Hungary, Greece, Poland, France, Netherlands, Switzerland, Spain, United Kingdom, Ireland, Germany, Italy, Austria, Israel</p> <p>Russian-Speaking Regions: Azerbaijan, Belarus, Kazakhstan, Lithuania, Georgia, Estonia, Latvia, Russian Federation, Ukraine, Moldova, Belarus, Uzbekistan</p>
Accuracy (Under recommended installation and lighting conditions)	<p>Capture rate > 99% till 180 KM/h Driving direction recognition accuracy > 98.5% Mistaken capture rate < 1.5% (entrance/exit), < 2%</p> <p>Capture rate > 99% till 180 KM/h Driving direction recognition accuracy > 98.5% Mistaken capture rate < 1.5% (entrance/exit), < 2%</p>
No License Plate Detection	Yes
Motorcycle LPR	Yes
Image	
Max. Resolution	2688 × 1520
Main Stream	50 Hz: 25 fps (2688 × 1520, 1280 × 720, 704 × 576, 352 × 288) - 50 Hz: 60 fps (1920 × 1080) 60 Hz: 30 fps (2688 × 1520, 1280 × 720, 704 × 576, 352 × 288) - 60 Hz: 60 fps (1920 × 1080)
Sub-Stream	50 Hz: 25 fps (1280 × 720, 704 × 576, 352 × 288) - 50 Hz: 60 fps (1920 × 1080) 60 Hz: 30 fps (1280 × 720, 704 × 576, 352 × 288) - 60 Hz: 60 fps (1920 × 1080)
Third Stream	50 Hz: 25 fps (1280 × 720, 704 × 576, 352 × 288) 60 Hz: 30 fps (1280 × 720, 704 × 480, 640 × 480)
Image Settings	Rotation mode, saturation, brightness, contrast, sharpness, AGC, and white balance are adjustable via client software or web browser.
SVC	H.264 and H.265 encoding
Day/Night Switch	Auto/Scheduled/Triggered by alarm in
Video Overlay	Logo picture can be overlaid on video with 128 × 128 in 24-bit bitmap format
Network	
Network Storage	microSD/TF card (128 GB), local storage, CVR, NVR, ANR
Alarm Trigger	HDD Error, Network Disconnected, IP Address Conflicted, Vehicle Detector Exception, Traffic Light Detector Exception
Protocols	TCP/IP, HTTP, HTTPS, FTP, DNS, DDNS, RTP, RTSP, RTCP, NTP, UPnP, IPv6, UDP
Security Measures	Password protection, HTTPS encryption, digest authentication for HTTP/HTTPS, digest authentication for ONVIF (Version 2.1)
General Function	One-key reset, three streams, heartbeat, password protection, watermark
API	ONVIF (Version 2.1), ISAPI, SDK
Simultaneous Live View	Up to 20 channels
User/Host	Up to 32 users. 3 user levels: administrator, operator, and user
Client	iVMS-4200, Hik-Connect, Hik-Central
Web Browser	IE7+
Interface	
Audio	Yes
Communication Interface	1 RJ45 10M/100M/1000M Ethernet interface, 1 RS-485 interface, Wiegand interface
Alarm	1 input, 1 output, 2 relays
Video Output	Network
On-Board Storage	Built-in microSD/TF card, up to 128 GB
Reset Button	Yes

General	
Firmware Version	2688 × 1520
Operating Conditions	Temperature: -30 °C to +70 °C [-22 °F to +158 °F] , -H: -40 °C to +60 °C [-40 °F to +140 °F] Humidity: 95% or less (non-condensing)
Power Supply	12 VDC to 24 VDC ± 20%, PoE (802.3at, class 4)
Power Consumption	Max.35 W
Protection Level	IP67, IK10
Heater	-H: yes
Material	Aluminum alloy
Dimensions	With package: 428.5 × 120 × 132.8 mm (16.87" × 4.72" × 5.23")
Weight	Camera: approx. 3.12 ± 0.5 kg (6.88 ± 1.1 lb)

* Listed resolutions are only selectable options. It does not mean that all streams can work at their maximum resolution at the same time.

*-H: Heater supported

